

Advising Night

- Thursday, Sept. 2, 377 CB, 5 pm
- All Students
- Ice Cream!
- Topics for Seniors:
 - [L3 Exam](#)
 - Last 2 weeks in September
 - Last 2 weeks in October
 - First 2 weeks in January
 - [Elective requirements](#)
 - [Schedule of engineering electives](#)
 - [Graduation clearances](#)
 - Exit interviews



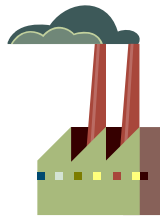
Dean's Lectures

- Oct 7 – L. Douglas Smoot (Homecoming)
- Nov 4 – Bradley Young
- Counts for ½ of a grade (A to A-)
- Oct. 21 - Randy Beard
 - EE Professor at BYU
 - Control systems for UAVs

Process Dynamics and Control



ChEn 436
Fall 2010
Dr. Fletcher

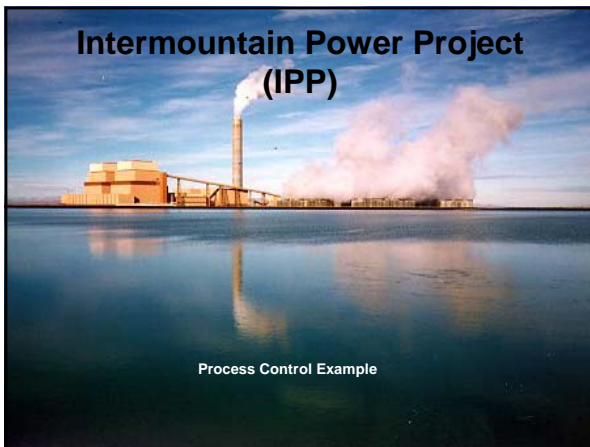


Dynamics

vs.

Control

Intermountain Power Project (IPP)



Process Control Example

IPP

- Two 975 MW boilers
 - 1 million lbs/hr of coal in each boiler
 - 10-15% ash
 - Tight control of NO_x, SO_x, particulate
 - Majority of ash sold for use in concrete
- AC power converted to DC
- All power shipped to LA and re-inverted to AC power

Old Control Room

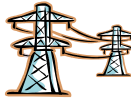
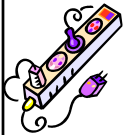


New Control Room



Suppose the demand for electricity decreases at 11 pm....

- What must be changed to lower the electrical output?



Assignment

- Reading (see Class Schedule)
- Read the Competencies
 - Mark any that you know already
- Note examples of controllers around you and be prepared to discuss them

