

2024 ASCE Civil Engineering Student Championships

Mailer 2: June 5th, 2024



Welcome to the Championships; we're almost there!

As we approach the 2024 ASCE Civil Engineering Student Championships, we want to express our deep appreciation for the hard work and dedication each team has put into their preparations. We hope this last month has been filled with successful planning, and we are excited to see your efforts come to fruition.

We are grateful to all the teams that filled out the Mailer 1 receipt survey. Your comments have been instrumental in helping us plan for the Championships. We hope to address many of your comments in the following mailer. This mailer is designed to provide Team Captains, Faculty Advisors, and Team Members with the information to prepare for the Championships.

We welcome your feedback and ask that all participants complete the Mailer 2 Response [Survey](#). Because the Championships are only 2 weeks away, we'll try to adjust where appropriate. Please complete the survey within one week of the mailer's posting. Please review the mailer before completing the survey, as a detailed reading may answer some questions.

Please remember that all individual participants must complete a [waiver](#) before arriving on BYU Campus.

Please note that some competition-specific details not included in Mailer 1 or 2 will be included in the Event Packet and Captains' Meetings. As before, if you have any specific questions or concerns, please don't hesitate to contact us at asce2024championship@byu.edu. This and the previous mailer will be posted on asce.ce.byu.edu. A pdf copy of is accessed [here](#).

Once again, welcome to the Championships! We are excited to see you all in a few weeks!



Taylor Miskin

BYU ASCE Championships Planning

Student Committee Chair



Adam Hill

BYU ASCE Championships Planning

Student Committee Co-Chair

Hello ASCE Student Competitors and University Guests!

Welcome to the Championships! We are excited to host you on the campus of Brigham Young University in Provo, Utah.

A BYU education is intended to provide a period of intensive learning in a stimulating setting where a commitment to excellence is expected, and the full realization of human potential is pursued. To that end, we pride ourselves on providing rigorous academics and ample opportunities for extra-curricular activities and professional development. As you visit our campus, we hope that you, too, will feel a measure of this purpose.

It has been my privilege to work with our student leadership team as we have prepared for the Championships. They have generously given of their time through countless hours of planning and preparation, while maintaining their academic obligations, internships, family responsibilities, and personal interests. I hope you will join me in expressing gratitude for their sacrifices and dedication to making this event possible.

We know that each of you has prepared to come and test yourself against others, in a fun, stimulating, and challenging environment. We anticipate that the competitions themselves will be competitive and exciting! However, we equally hope that you will take this opportunity to build lifelong connections with your fellow competitors. I believe that the most valuable things you can leave with will not be a trophy or some other award, but rather the relationships that develop and strengthen, the personal growth you experience, and the memories you make. We have provided an array of opportunities for you to connect with others and encourage you to begin interacting with other teams (using [Discord](#)) even before you arrive here at BYU.

Karl G. Maeser, a key founder of BYU, once said, “Those who work merely for the sake of reward do not comprehend the purpose of their living here upon the earth.” We invite you to consider the journey you have taken to get here, and how all the aspects of the Championships experience can positively affect your life. We hope that this will be a fruitful weekend!

Godspeed in your travels, and welcome to BYU,

A handwritten signature in black ink, reading "Clark B. Farnsworth". The signature is written in a cursive, flowing style.

Dr. Farnsworth, Ph.D, PE

BYU ASCE Faculty Advisor

Things to do Now

The following are items of immediate importance that every team member should review ASAP, especially with the waiver.

URGENT: Waiver Link

To compete at the Championships, each participant **MUST** complete a [waiver](#). Teams cannot check in until all team members have completed the waiver. **Please complete the waiver before you arrive at BYU.** The waiver is available in individual registration and at the following link.

ALL TEAM MEMBERS MUST SIGN A WAIVER TO PARTICIPATE: <https://asceforms.wufoo.com/forms/w1wo7shs0viu9k0/>

Registration Information

Participant Registration is due **THIS Friday, June 7th**, with payment due by **NEXT Thursday, June 13th**. Please use this [link](#) to complete individual registration. The following describes the different registration options and their prices:

- Full Registration and Banquet (Wednesday Arrival)—\$275. This includes full registration for the Championships. It is designed for Concrete Canoe and Surveying Competitors and may be utilized by Sustainable Solution Competitors if they choose. Captains' Concrete Canoe and Surveying meetings will be held on Wednesday at 8:15 PM MDT.
- Two-Day Registration and Banquet (Thursday Arrival)—\$250. This includes all meals and registration, except for Wednesday night Social Events and Thursday Breakfast and Lunch. It is designed for Sustainable Solution Competitors.

It is recommended that participants double-check their emails and receipts BEFORE June 7th to confirm that they have everything in order when they arrive. If you have questions or concerns concerning your registration, please contact Eden Butler (ebutler@asce.org).

Note, there is no banquet-only option. ASCE and Brigham Young University are not able to accommodate additional team members and ASCE student chapter members outside of the maximum of official team members and one(1) Faculty Advisor at this time due to limited capacity.

Please note that we will be providing meals and swag bags only for registered participants. We will not be providing meals (including access to the Awards Banquet) for spectators/ additional team members who travel with a registered, official team member. Additionally, swag items and Championships t-shirts are only for registered participants and extras will not be provided.

Discord Communications

We will use a Discord server for the Championships to communicate any schedule changes, important announcements, lost items, activities and other things before and during the event. There will be different channels for various topics around the competition and informal gatherings. Make sure notifications are on so that you don't miss anything.

You can access the server [here](#). When participants join, they should format their server "nickname" in this manner: Name, School (ex. John Smith, BYU). We will compare this list with registered attendees to ensure that the Discord server isn't subject to abuse. Resources are available on the server to help those who aren't familiar with Discord make this adjustment to their server nickname.

The Discord server is meant to enhance our experience at the Student Championships. As such, acts of profanity, violence, racism and other prejudice will NOT be tolerated. Spam and marketing messages, including from Sponsors, will also not be tolerated. Inappropriate photos, including those with about drinking will not be tolerated. Those who do not follow expectations will be banned from the server.

Accommodations Notice

The deadline to request accommodations to help with physical limitations or language assistance, mentioned in Mailer 1, was on May 20th and has since passed. If you have not yet requested accommodations and need them, you are still welcome to contact [us](#), and requests will be addressed on a case-by-case basis. However, we cannot guarantee that we will be able to acquire the equipment or accommodations requested.

If you need a wheelchair during your stay, below are rental businesses in Provo that you can contact.

- [Alpine Home Medical](#)
- [IOC Home Medical](#)

Shipping Competition Materials and Canoes

If your team was planning on shipping its canoe to BYU for the competition, the deadline to let us know was May 17th. If your team still needs this accommodation, please contact us ASAP, and we will see how we can help on a case-by-case basis.

Don't forget about the [Waiver](#)!

Mailer 2 Confirmation Survey

Please review the entire mailer and complete the Mailer 2 receipt [survey](#). The survey will allow participants to ask questions in the survey, so please read the whole mailer before submitting the form. The survey will close after one week of mailer posting.

Hotel Block Reservation Deadline

During the summer, BYU is a lively campus, hosting thousands of youth per week in various religious, sports and academic camps. These events use most of the on-campus housing during the summer.

The deadline to register for the Marriott hotel block was May 27th. If you haven't booked accommodations yet, do so promptly. For those with reservations, please double-check to ensure everything is ready for your stay. If you are still in need of housing accommodations, please reach out to [us](#) ASAP.

Please note that breakfast is not included in the hotel reservation but will be provided each day of the competition at the various event locations. Note, Friday breakfast will only be provided at Utah Lake State Park and a shuttle will be provided for all participants. The hotel offers free Wi-Fi, a fitness center and on-site parking (no trailers). Please get in touch with the hotel individually for questions on parking or accommodation particulars.

Utah Lake State Park Policies

Due to our contract with Utah Lake State Park and so everyone has an enjoyable time, we have been asked to include the following policies: All the following acts are PROHIBITED.

- Building, maintaining, attending, or using any fire, or campfire except in a designated fire ring
- Smoking, chewing tobacco, vaping, alcohol, and non-prescription drugs are not permitted inside any building on our grounds or under any pavilion. Smoking is not allowed within 25 feet of entrances.
- Discharging or using any fireworks, tracer ammunition, or other pyrotechnic devices, including exploding targets.
- Firearms may not be discharged near campsites, picnic areas, or within 600' of any building in our park.
- Flying of drones (UAS) from or within the State Park.

For more information regarding Utah Lake policies and regulations please refer [here](#).

BYU Campus and Event Policies

Due to the agreement between ASCE and BYU, we have been asked to include the following policies. Please reach out to [us](#) if you have questions.

Any use of these substances or participation in these acts will result in immediate dismissal from all Championship events and restriction from accessing BYU campus.

Alcohol, Drugs & Smoking

Brigham Young University campus is an alcohol & drugs free campus. They are strictly PROHIBITED on campus for the entire event. Please also note that smoking or the use of electronic e-cigarettes is NOT allowed on BYU campus, and in compliance with Utah state law, all buildings are smoke-free areas.

Firearms

Explosives, fireworks, firearms and other weapons or dangerous items are PROHIBITED on the BYU Campus.

Sexual Misconduct

Brigham Young University is committed to creating and maintaining a safe and respectful environment for the campus community free of sexual harassment, sexual violence, domestic violence, dating violence, or stalking (“Sexual Misconduct”). Sexual Misconduct is strictly prohibited on the BYU Campus and will NOT be tolerated.

Team Tents

Teams can and are encouraged to set up canopies/popup tents during extended outdoor events. Weather conditions during the Championships are anticipated to include high UV exposure, and prolonged exposure may be harmful. Tents during the Concrete Canoe Display and Races must stay within the designated team spaces, and tents set up during Surveying Field Tasks must not interfere with the competition.

However, it is essential to note that teams are **not allowed** to have gas stoves under or near their tents at any time. Additionally, tents must be securely fastened down at all times as teams will be responsible for all subsequent damages.

General Notice

Championship participants are guests on the BYU Campus for the duration of the Championships. Youth camps with upwards of 3,000 participants, on-campus conferences, Spring Term Finals and Summer Term New Student Orientation and other events will all occur concurrently with the Championships. Championship participants are expected to cooperate with these various groups and respect everyone on BYU campus.

Any conduct determined as disrespectful or disruptive on campus will lead to the dismissal of all those involved. We have made great efforts to minimize interactions with these other groups for your comfort and ask for your assistance in keeping BYU a safe space for all.

Don't forget about the [Waiver!](#)

Weather & Nature Notice

Please bring plenty of sunscreen, water bottles and anything else to avoid heat stroke or sunburn. The Provo area is 4,551' above sea level, and with an average high temperature of 85°F, the UV exposure is substantially greater than at sea level.

In addition, Utah Lake is a shallow, hypereutrophic body of water, with a maximum depth of 14' (9' in harbor) and minimal currents (you can learn more about Utah Lake [here](#)). Participants are encouraged to bring bug spray and long-sleeve clothing to avoid the itch from gnats, flies and mosquitoes that will be present.

We are not expecting an algae bloom this early in the season, particularly with a longer spring, high levels of precipitation and heavy mountain snowpack runoff. The races will be canceled if algae concentrations develop to toxic levels (again, very uncommon for this early in the summer). Races will also be canceled or delayed in the event of lightning storms or high winds. Although large crests are common in Utah Lake (up to 4-6'), due to the protected nature of the Utah Lake State Park beach area, crests no higher than 8" (average of 2"-6") are expected during races.

As Provo is in a desert climate, rattlesnake sightings, although uncommon, have occurred on the Y-Trail. Generally, due to the high traffic on the trail, other people will have already seen it and will warn each other of its presence. These creatures also tend to warn passerby of their presence, and we recommend being aware of your surroundings and not hiking with audio devices.

Technology and Social Media

The following sections describe how to connect to the internet while on campus, how to print documents and the social media details for the Championships. Presentation submission details are also included in this section.

Internet & Technology

For all events that occur on BYU campus, a guest wireless internet network is available for use. Instructions on accessing the guest and the Eduroam network can be found with this [link](#) once you arrive on campus, otherwise, please refer to this [website](#). If you click on the guest network, you will be rerouted to a webpage where you must agree to the listed terms and conditions. Please note that this network is intended for guests of the University and will require re-authorization once every 24 hours. If your university uses the Eduroam network, you can log in with your “.edu” email and password.

For those staying at the Marriott Hotel, they provide free Wi-Fi and will have all the information necessary for you to connect.

BYU Cougar Creations in the Wilkinson Student Center can be used to print documents and other specialized items. Please refer to their website for more information, <https://print-mail.byu.edu/print-locations>. Additionally, the Provo Marriott hotel may have printing services available. We highly recommend that participants print all documents, including posters, plan sheets, appeal forms and other materials before arriving on BYU campus. When in doubt, just print it and bring it.

Social Media

We would love for you to use the hashtag, #ASCEchampionships on your socials throughout the event to share your experiences while you are here!

Various social media pages within BYU, ASCE and Sponsors will share information about the Championships. Participants are encouraged to share these pages to promote the Championships and ASCE. These include ASCE official pages include [@asce_hq](#) and [@ASCETweets](#), and BYU pages [@byu_asce](#) and [@byu_cce](#). Following and tagging these pages in your posts will maximize your chances of getting reposted. We also encourage attendees using Instagram to use competition specific stickers, which can be found by searching by competition name.

The [Discord](#) server is great for connecting with fellow competitors, Sponsors and ASCE officials. Once the Championships begin, please send any questions to the Discord server so our team can respond quickly.

Resume Database

A resume database entry link will be provided on the [Discord](#) server. We invite all participants to prepare a PDF and print copies of their resume to be shared with Championships Sponsors.

Presentation Submission

To streamline competition presentations, please submit your presentation [here](#) before arriving at BYU. **Concrete Canoe Teams are required to submit their presentations** and will have up to 10 minutes during AV check to verify functionality.

To ensure competition flow, all competition teams, including Surveying and Sustainable Solutions, are required to submit their presentations by 12:00 PM on June 17th.

Please submit your presentations in .pptx file format to better streamline presentations. The submission form will not accept other formats. Please be cautious with videos in your presentations as functionality may vary. To check if your presentation will work, we recommend downloading your presentation to a computer other than the one you made it on and testing it.

A list of submitted files will be sent to Team Captains for verification of submittal on June 11th and June 18th. Please let us know if Team Captains have questions or concerns about their submittal. Teams can have multiple submissions, but only the most recent submission will be available during the competition. Teams may also bring their presentation on a flash drive if there are concerns but must indicate so on their submission.

Please note that submitting the presentation here does not satisfy any competition requirements. Teams are responsible for being familiar with the rules of their respective competitions and ensuring that reports and other submissions are complete with ASCE.

Don't forget about the [Waiver](#)!

Schedule of Events

Below is the schedule for the Championships, with locations corresponding to Figure 1. Although unlikely, locations and times are subject to change. Any adjustments will be sent to the [Discord](#) server.

Key	General	Concrete Canoe	Sustainable Solutions	Surveying
BYU – Brigham Young University, EB – Engineering Building, CB – Clyde Building, WILK – Wilkinson Student Center, CONF – Conference/Harmon Building				

Wednesday, June 19: Check-In Day			
3:00 PM	8:00 PM	Check-In & Registration	BYU West Campus Parking Lot
8:15 PM	9:00 PM*	Team Captain's Meeting (Concrete Canoe)	EB Classroom 325
8:15 PM	9:00 PM*	Team Captain's Meeting (Surveying)	EB Classroom 321

* Note: The EB will be closed after 9:30.

Thursday, June 20: Canoe Display, Surveying Presentations/Display, & Sustainable Solutions Poster Display Day			
6:15 AM	8:15 AM	Display Drop Off (Concrete Canoe)	CB Parking Lot
7:00 AM	10:45 AM	Canoe Display Set-up	Cougar Crossing
6:00 AM	7:30 AM	Morning Snacks	CB Step Down
8:00 AM	9:00 AM	Breakfast	CB Step Down
7:30 AM	2:00 PM	Surveying Presentations	EB Weidman Center
8:00 AM	3:00 PM	Check-In & Registration (Sustainable Solutions)	EB Atrium
9:00 AM	3:00 PM	Surveying Equipment Practice	Kimball Quad
8:00 AM	2:00 PM	AV Check (Concrete Canoe)	EB Event Space
8:00 AM	10:45 AM	Weighing & Measuring (Concrete Canoe)	CB Structures Lab
8:00 AM	10:45 AM	Concrete Canoe Team Photos	Cougar Crossing
11:00 AM	1:00 PM	Lunch (Wednesday Check-In Only)	WILK Garden Court
11:00 AM	2:00 PM	Meet the Sponsors	WILK Garden Court
12:00 PM	12:15 PM	Team Captain's Meeting (Concrete Canoe)	Cougar Crossing
12:30 PM	5:00 PM	Canoe Display Judging	Cougar Crossing
1:30 PM	2:30 PM	Surveying Team Photos	Cougar Crossing
2:30 PM	4:30 PM	Snacks	CB Step Down
3:00 PM	4:00 PM	Sustainable Solutions Team Photos	EB Event Space
4:00 PM	5:30 PM	Sustainable Solutions Poster Display	EB Event Space
4:00 PM	5:30 PM	Surveying Topo Map Display	EB Event Space
4:00 PM	5:30 PM	Canoe Display Take-down	Cougar Crossing
6:00 PM	7:00 PM	Welcome Address	WILK Garden Court
7:00 PM	8:30 PM	Dinner	Kimball Quad
7:00 PM	9:00 PM	Social Events	WILK Bowling Alley & Kimball Quad
8:00 PM	10:00 PM	<i>Cities of the Future</i> Screening	WILK Garden Court

Friday, June 21: Canoe Races, Surveying Showcase, & Sustainable Solutions Field Trip Day (Off-Campus)			
6:30 AM	8:00 AM	Concrete Canoe Drop off & Swamp Test	Utah Lake State Park
6:00 AM	8:00 AM	Morning Snacks	Utah Lake State Park
8:00 AM	9:30 AM	Breakfast	Utah Lake State Park
8:00 AM	8:20 AM	Team Captain's Meeting (Concrete Canoe)	Utah Lake State Park
8:45 AM	11:30 AM	Sustainable Solutions Field Trip	Provo River Delta (pickup/drop-off @ Utah Lake)
9:00 AM	11:45 AM	Surveying Showcase	EB Event Center & Carillion Quad (pickup/drop-off @ Utah Lake)
8:30 AM	1:50 PM	Sprint and Slalom Races	Utah Lake State Park
11:00 AM	1:00 PM	Lunch	Utah Lake State Park
2:30 PM	4:30 PM	Petite & Grand Sprint Finals	Utah Lake State Park
6:00 PM	8:00 PM	Dinner (on your own)	
8:00 PM	10:00 PM	Social Events	Richards Building Courts, Y Trailhead & Cougar Field

Saturday, June 22: Canoe Presentations, Surveying Field Tasks, & Sustainable Solutions Presentations Day			
7:30 AM	9:30 AM	Breakfast	CONF Pavilion
7:15 AM	7:45 AM	Team Captain's Meeting (Concrete Canoe)	CONF 2254
7:30 AM	8:15 AM	Team Captain's Meeting (Surveying)	CONF 2265
8:15 AM	8:45 AM	Team Captain's Meeting (Sustainable Solutions)	CONF 2295
8:00 AM	5:00 PM	Concrete Canoe Presentations	CONF 2254
8:30 AM	4:00 PM	Surveying Field Tasks	Carillion Quad
9:00 AM	3:00 PM	Sustainable Solutions Presentations	CONF 2295
12:00 PM	1:30 PM	Lunch	CONF Pavilion
3:30 PM	4:00 PM	Sustainable Solutions Appeals	CONF 2287
4:00 PM	5:00 PM	Sustainable Solutions Debrief	CONF 2287
7:30 PM	10:00 PM	Awards Banquet	CONF Ballroom

Don't forget about the [Waiver!](#)

Sustainable Solutions: Sustainable Solutions Poster Session. *Teams will stay with their poster during the display to answer questions about the project.* Poster walls and easels will be provided by BYU for teams to display posters. *Teams are responsible for transporting their posters to BYU and back home.*

Sustainable Solutions Field Trip – Provo River Delta Restoration Project Tour (June 21st at 8:45am). Come prepared by wearing closed-toe shoes that can get dirty. Sunscreen and water are recommended. The meeting place at Utah State Park to pick up the shuttle vans for the tour will be announced soon.

Concrete Canoe Teams: Please note that *all paddlers are required to wear a US Coast Guard-approved inherently buoyant (no inflatables) Type I, II, or III Personal Flotation Device (life jacket) while in a canoe during competition per ASCE regulations. Additionally, scales will be provided to weigh unbroken concrete cylinders during canoe weigh-in.*

Surveying Competition teams: Please note that *all team members are required to wear close-toed shoes and either a safety vest or high-visibility shirt (construction or high-visibility yellow, orange, pink, blue, red, or green) while completing the Field Tasks portion of the competition.*

Topo Maps Info. Two copies of your topo map must be brought to BYU and turned in at registration. (This is an update to the rules that state two sets will be mailed to the host school.) One will be for the Surveying Topo Map Display on Thursday, June 20th at 4:00 PM. The second one will be for the judges. Teams are expected to stay with their maps during the display session on Thursday, June 20th from 4:00 PM – 5:30 PM.

Group Photos

There will be no “official” group photos for the different competitions. However, there will be some events that will be more conducive to group photos:

- Concrete Canoe: We will have a drone photographer taking aerial images during Canoe Display Judging sometime between 1:00 PM and 4:00 PM. A better estimate will be provided in the Discord and teams are encouraged to be present to participate in a group picture.
- Sustainable Solutions: Some options include before Poster Displays or after the Field Trip
- Surveying: We will have a drone photographer taking aerial images during Surveying Field Tasks. A estimate of that time will be coordinated with the judges for a group photo. Or a group photo could be taken after or during the Surveying Showcase.

These ideas are non-comprehensive and we encourage competitors to use the Discord to organize informal group gatherings.

Captain's Meetings

Those attending Captain's meetings in the BYU Engineering Building on Wednesday, June 19th, and in the Conference Center on Saturday, June 22nd, may travel using the UVX or personal vehicles, as parking opens to the public outside of business hours. Please refer to specific parking lot signage, as enforcement times differ. Each of the competitions will have a particular room to meet in. Please refer to the General Schedule to find the room your competition is assigned.

KEY

- 1 Trailer Parking Lot
- 2 Engineering Building
- 3 Clyde Building
- 4 Cougar Crossing
- 5 Wilkinson Building
- 6 Kimball Quad
- 7 Richards Building
- 8 Carillon Quad
- 9 Conference Center/Harmon Building
- 10 Cougar Field
- 11 UVX Station South Campus
- 12 UVX Station North Campus

P - Parking

Visitor Parking

Weekend & Holiday Parking

Competition Events

Social Events

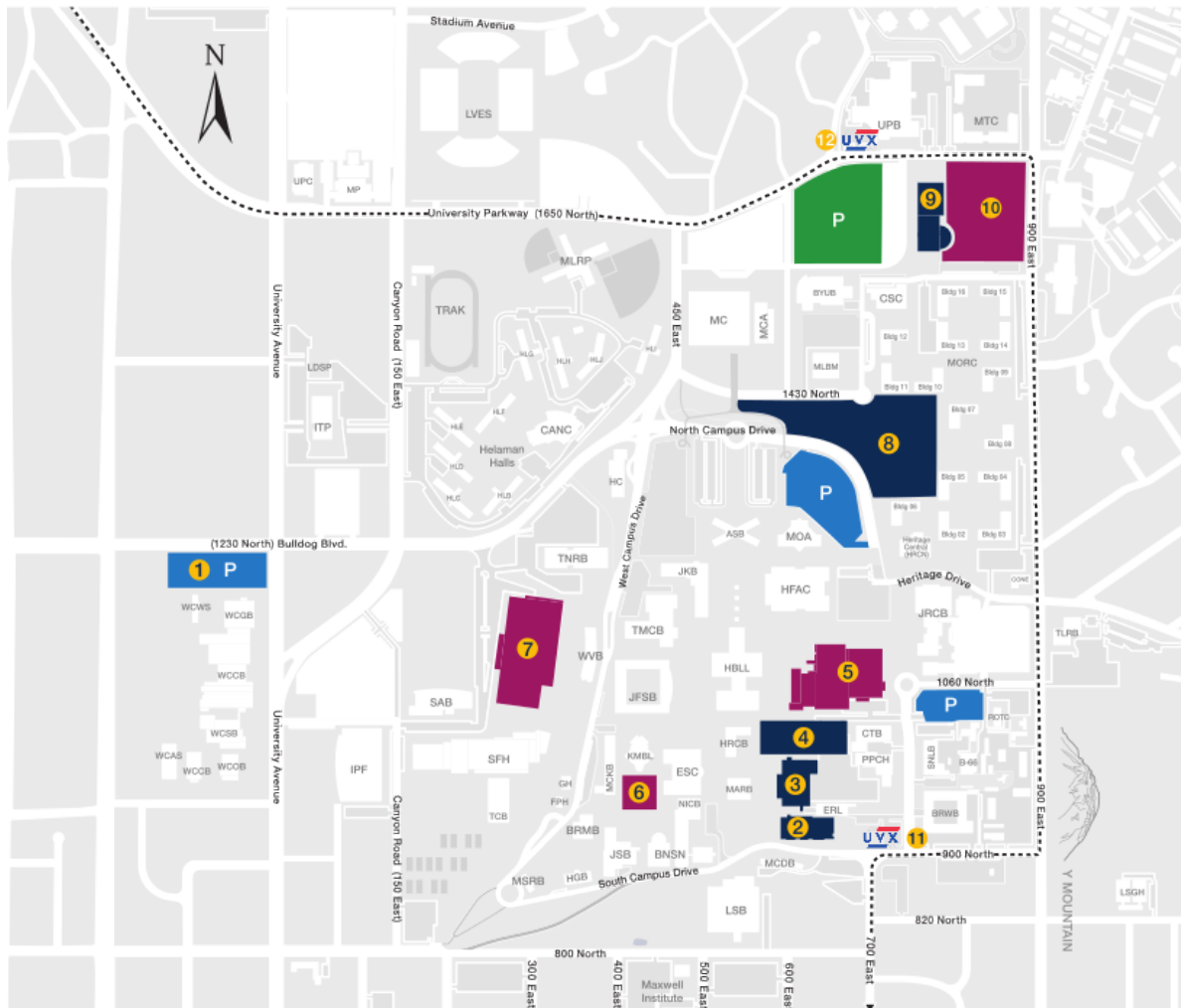


Figure 1: BYU Campus Map and Key Locations

It is essential for each Team Captain to come to their designated meetings, as information will be shared that is not included in this mailer. Please note in the general schedule when and where each meeting is held. These meetings will cover presentations, displays, pictures, technical activities, specific scheduling information and time for questions.

Meal Locations

Meals will be provided throughout the event at BYU campus and Utah Lake State Park. Please note that each meal may be provided at a different location on a given day. Refer to the general schedule and campus map provided to find each location (see Figure 1).

Please note that we will be providing meals only for registered participants. We will not be providing meals for spectators/team members who travel with registered participants but are not registered themselves. Additionally, swag items and Championships t-shirts are only for registered participants and extras will not be provided.

Keep in mind that a meal will not be provided Friday evening. The [Provo/Orem area](#) has a diversified selection of restaurants ranging from small businesses to popular chain restaurants accessible through the UVX bus system.

Most meals will be either “grab & go”, or “buffet” style. Volunteers and signage will be present to help direct traffic flow and we ask that all participants cooperate as we try to feed 600 people at once. Buffets will be catered by 3rd party caterers who will provide the infrastructure needed to minimize wait times, although lines of 10-15 minutes are expected.

Due to the unique relationship between BYU and the Church of Jesus Christ of Latter-Day Saints, no coffee or tea is sold on BYU campus. Participants are welcome to bring their own coffee to campus. Coffee will be provided initially with breakfast delivery at Utah Lake State Park and for the duration of Saturday’s breakfast.

Transportation

The following section describes the transportation accommodations we will provide or recommend during the Championships. Please note that specifics may be adjusted before the Championships, and participants should refer to the Discord and UTA websites to confirm plans.

Airport Travel

Teams flying to Provo Airport will not be provided with transportation to or from the airport. Transit options are available, but teams are recommended to use Lyft or Uber if they do not procure a rental vehicle.

For teams flying into Salt Lake City International Airport, Utah Transit Authority (UTA) services are available (UTA will be running regular weekday service on Juneteenth) and can provide access to BYU Campus and the Provo Marriott hotel. Google Maps or other map services are often very reliable in illustrating these connections. Transportation from the Provo Marriott Hotel to the Team Check-in at the West Campus lot will be provided for those not procuring rental vehicles.

Sunday Travel: For those leaving on Sunday, note that Utah's public transportation system has very limited options, and it will be harder to get to places in Provo and to the airport. Lyft and Uber services are available in Utah and are the recommended alternate mode of transportation on Sunday. If you have any questions or concerns, please let us know on the Mailer 2 Response [Survey](#). Van service from the hotel to the Trailer Parking Lot will be available upon request only. Details on how to request that service is provided in the Mailer 2 Response [Survey](#).

Don't forget about the [Waiver](#)!

General Travel

Due to restricted parking on BYU Campus and Utah Lake State Park, shuttles and alternate transportation measures will be provided. The Utah Valley Express (UVX) bus rapid transit is a free UTA transit option with 5-to-10-minute headways during weekday peak periods (7 AM - 8 PM) and 15-to-30 minute headways during weekday off-peak times and 7 AM - 10:30 PM Saturday. There is a stop within 1 block of the hotel (Center Street Stations) and at both Championships primary locations on BYU Campus (BYU North and South Stations) and is the recommended method to arrive to BYU campus on Thursday, June 20th. Figure 2 shows the different UVX stops and the competition venues' locations.

For those bringing a vehicle and wishing not to park it at the Marriott hotel, parking may be available in the Trailer Parking Lot (see item 1 in Figure 1). Trailers and trucks will be given priority for these spots. Access to this area is limited through public transportation, and we will not provide constant transportation to the Trailer Parking Lot.

Shuttle Services

Table 1 illustrates the shuttles that will be provided during the Championships.

Table 1: Shuttle Service Summary

Day	Loop Provided	Times	~ 5-10 minute headways
Wed	Registration lot to Hotel (ALL)	2:45-8:00 PM	
Thu	Hotel to Engineering (ALL)	6:00-7:30 AM	
	Hotel to Trailer Parking Lot (CC)	5:45-8:30 AM	
	Clyde to Trailer Parking Lot (reduced) (CC)	8:45-3:45 PM	No set headway
	Clyde to Trailer Parking Lot (CC)	3:45-6:30 PM	
Fri	Hotel to Trailer Parking Lot (CC)	6:00-7:30 AM	
	Hotel to Utah Lake (ALL)	6:00-8:00 AM	
	Hotel to Utah Lake (reduced) (ALL)	8:00-4:00 PM	No set headway
	Surveying Showcase	9:00 AM-12:00 PM	
	Sustainable Solutions Field Trip	8:45 AM-12:30 PM	
	Utah Lake to Hotel (ALL)	4:30-6:00 PM	
	Hotel to Trailer Parking Lot (CC)	4:30-6:00 PM	Depending on end of races
	Y-Trail Hike (ALL)	7:45-10:30 PM	First shuttle to leave at 7:45 PM No set headway during
	RB Basketball (ALL)	7:45-10:30 PM	See above
Sat	Hotel to Conference Center (ALL)	6:30-10:30 PM	

Friday travel for SSC and Surveying: *Breakfast is only served at the lake, and not at each of the field trip/showcase sites.* If attendees participating in either of these two events want breakfast, they will need to drive/shuttle to Utah Lake. *Pick up for the river tour is at the lake at 8:45 AM, with the tour beginning at 9 AM. When the tour is complete, transportation will be provided back to the Utah Lake where lunch will be served.* Pick up for the Surveying showcase is at 9:00 AM at Utah Lake, with the showcase beginning at approximately 9:20 AM on campus at the EB Event Center. Transportation will be provided back to the Utah Lake for lunch and to watch the Concrete Canoe races.

Truck and Trailer Drivers

All truck drivers coming to the Trailer Parking Lot to drop off their truck and trailer on Wednesday, June 19th, from 3:00 to 8:00 PM will need to enter the parking lot from the north entrance. Figure 3 illustrates the location to enter and where to park. Drivers must drive down Cougar Blvd from the West, as medians prevent drivers from taking a left-hand turn into the lot. Once in the lot, volunteers and signs will guide drivers where to park.

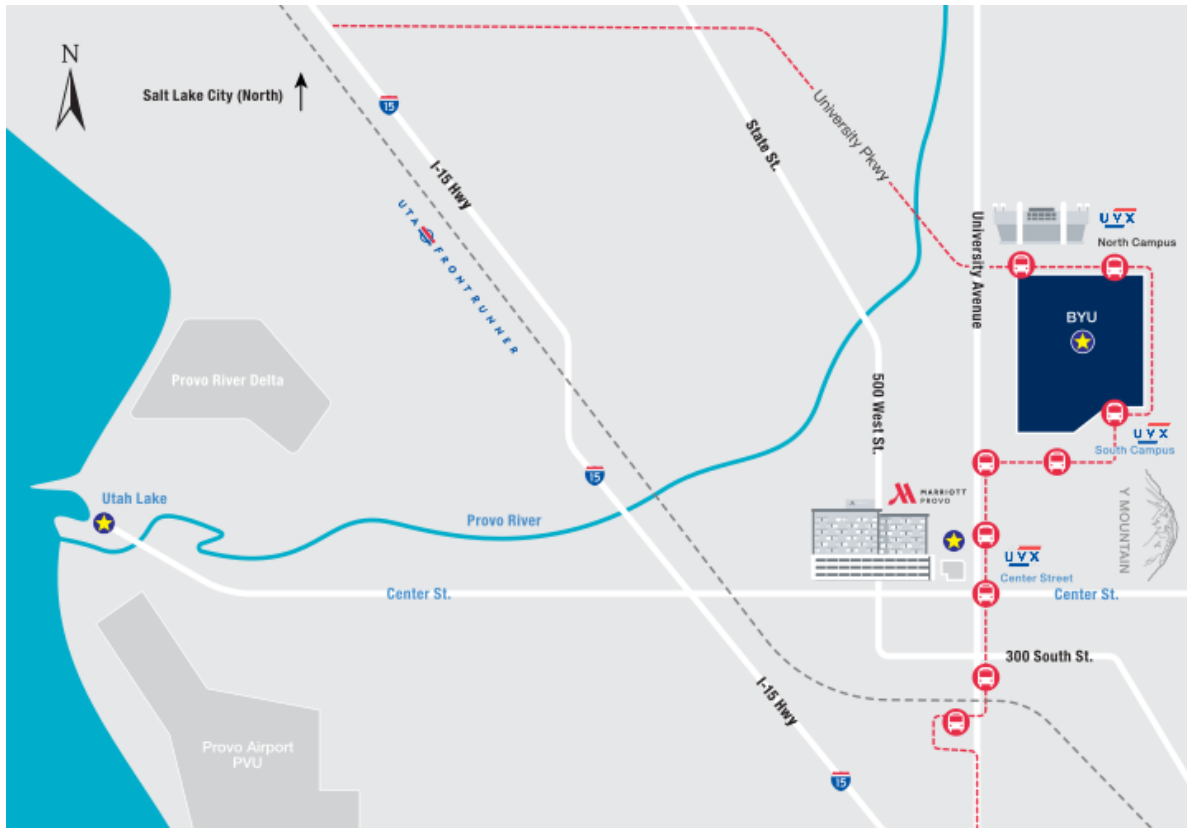


Figure 2: General Championships Map (Provo, UT)

A shuttle service will be provided on Thursday, June 20th, to transport truck drivers from the Marriott hotel to trailer parking in the Trailer Parking Lot from 5:45 to 8:20 AM (see Table 1). Additionally, a shuttle from the parking lot East of the Clyde building on campus to the Trailer Parking Lot (see Figure 3 for shuttle drop-off/pick-up location) will be provided.

To travel from the Trailer Parking Lot to Campus, we have created a recommended route (see Figure 4) to reduce tricky turns for large trailers and optimize travel flow. No particular directions are needed to travel to Utah Lake State Park except as indicated in Figure 8 upon arrival.



Figure 3: Trailer Parking Lot Entry/ Check-in

On Friday, June 21st, a shuttle from the Marriott hotel to the Trailer Parking Lot will be provided for truck drivers from 5:45 to 8:00 AM (see Table 1). At check-in, each Concrete Canoe teams will receive one parking pass for their truck and trailer to access Utah Lake State Park.

BYU Campus Police maintains campus security across BYU campus through police patrol and security cameras, including the Trailer Parking Lot, but no additional security will be provided. Teams are encouraged to lock trailer doors and hitches to maintain vehicle and trailer security.

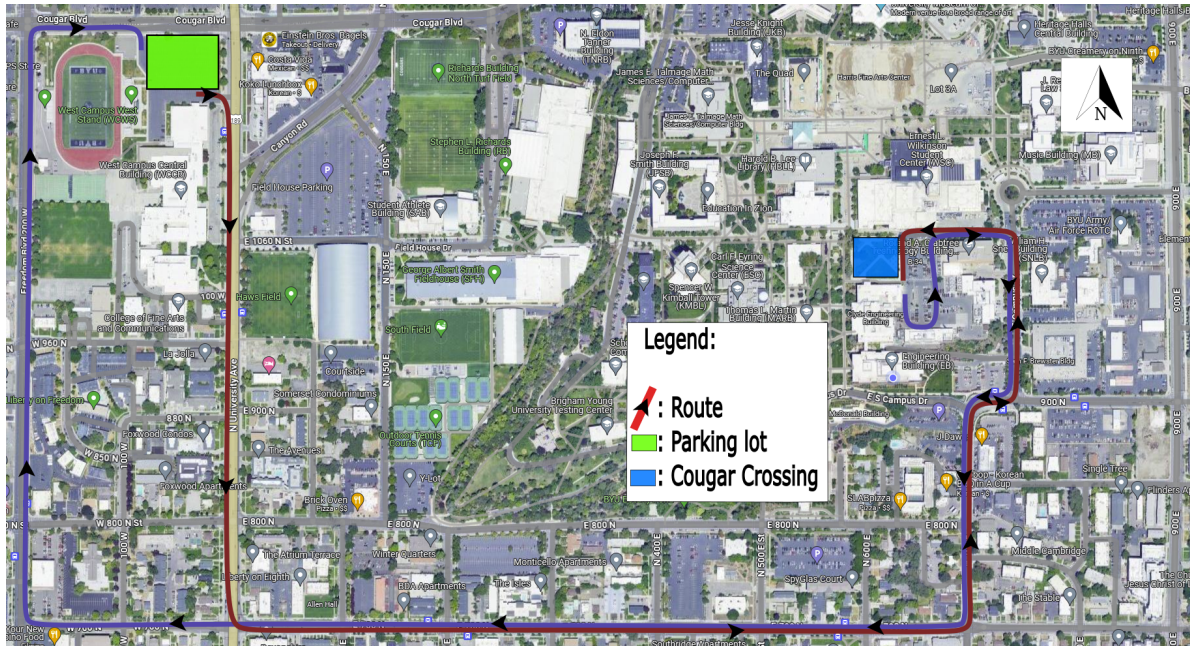


Figure 4: Recommended Concrete Canoe Display Trailer Travel Route

Friday Travel Accommodations

A shuttle system will be provided on race day, but there will be no timetable for when shuttles will arrive/leave their destinations (see Table 1). Participants should plan accordingly so they do not arrive late for their event. If anyone chooses to drive a private vehicle to Utah Lake State Park on Friday, they will be expected to pay for a day pass (\$20 per vehicle, \$5 per walk-in), as there will only be one parking pass given to each Concrete Canoe team for their truck and trailer.

Saturday Travel Accommodations

Campus parking is open to the public on Saturday, June 22nd, and participants are free to travel to campus as they choose. The UVX will be running and is a great option to get to campus. Trailers will be expected to stay at the Trailer Parking Lot until teams leave Provo.

Schedule Specifics

This section builds off the previously shown schedule with more details to help with planning. Please note that some specifics may change before or during the Championships. All adjustments will be posted on the Championships [Discord](#) server.

Wednesday, June 19th

Check-In & Registration

Check-in & Registration will be in the trailer parking lot on the South end from 3:00 to 8:00 PM. A shuttle will be provided to pick people up from the Marriott Hotel and drive them to and from check-in (see Table 1). Only Team Captains and/or Faculty Advisors (or a team representative) are needed to check their whole team in, but this will only be possible if every member of your team has signed the [waiver](#) BEFORE they arrive in Provo.

If participants do not sign the waiver before check-in, their team will not be allowed to register. A sign-up sheet for when teams will arrive will be provided on the [Discord](#) server, if teams would like to self-stagger their arrivals to shorten wait time, as our staff can only actively help one or two teams at a time.

Surveying Teams should be prepared to turn in two copies of their plan sheets at Check-In. Rubber bands will be provided to separate plan sheets into two groups, one for display the following day and the second for the Judges.

Don't forget about the [Waiver](#)!

Concrete Canoe and Surveying Team Captain Meetings

Team Captain meetings on Wednesday night will be held in the Engineering Building (EB) on BYU campus in rooms 321 and 325. Please refer to Figure 5 for details on where these rooms are located. The basement southeast door to the EB will open at 7:30 PM, and Team Captains are invited to come early before the official meetings to meet with other Team Captains and socialize. The meetings will begin at 8:15 PM and last approximately an hour.

Because of the Juneteenth holiday, the building will be locked after 9:30 PM, and participants will not be able to re-enter the building until Thursday morning.

Thursday, June 20th

All events will be held on BYU South Campus.

Canoe Display Drop-off/Pick-Up and Set-up

Concrete Canoe Displays will occur at Cougar Crossing, an open area just north of the Engineering and Clyde Buildings. Truck drivers should pull up to the West edge of the lot, where teams will unload their canoes and display materials in their team's designated space in the quad (see Figure 6). Once their canoe is dropped off, they will drive their truck/trailer through the parking lot, exit to the North to help with traffic flow and return to the trailer parking lot (see Figure 7).

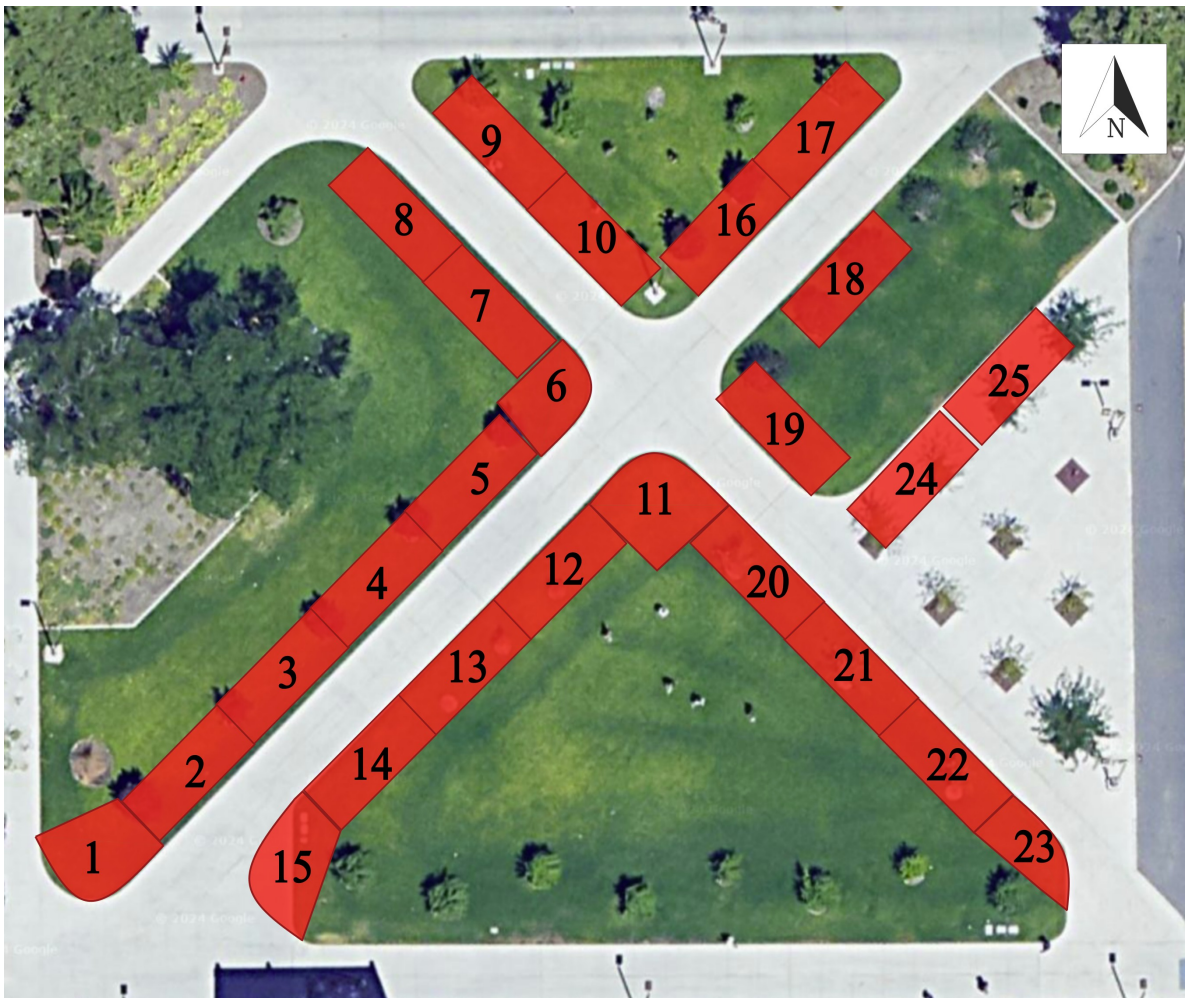


Figure 6: Concrete Canoe Display Team Areas

Drop-off will be from 6:15 to 8:15 AM, and a detailed schedule will inform each team of when they will be responsible for dropping off their canoe. This schedule and display lot assignments will be provided at the Wednesday night Concrete Canoe Captains' meeting. Teams will have no more than 10 minutes to drop off their canoes and related display materials. After 10 minutes, trucks will be asked to pack up and leave to make space for the next team.

If the display drop-off is backed up, incoming truck drivers will be asked to wait in the parking lot (Figure 4). A shuttle will run between the Marriott Hotel and the Engineering Building to the Trailer Parking Lot to help truck drivers get to and from their vehicles (see Table 1).

Concrete Canoe Pick-Up will begin with the first trucks arriving at 4:00 PM. Teams will have 10 minutes to load their trailer with their canoe and display materials. We recommend teams coordinate with their truck drivers to ensure their display is packed and ready to move once their truck arrives.

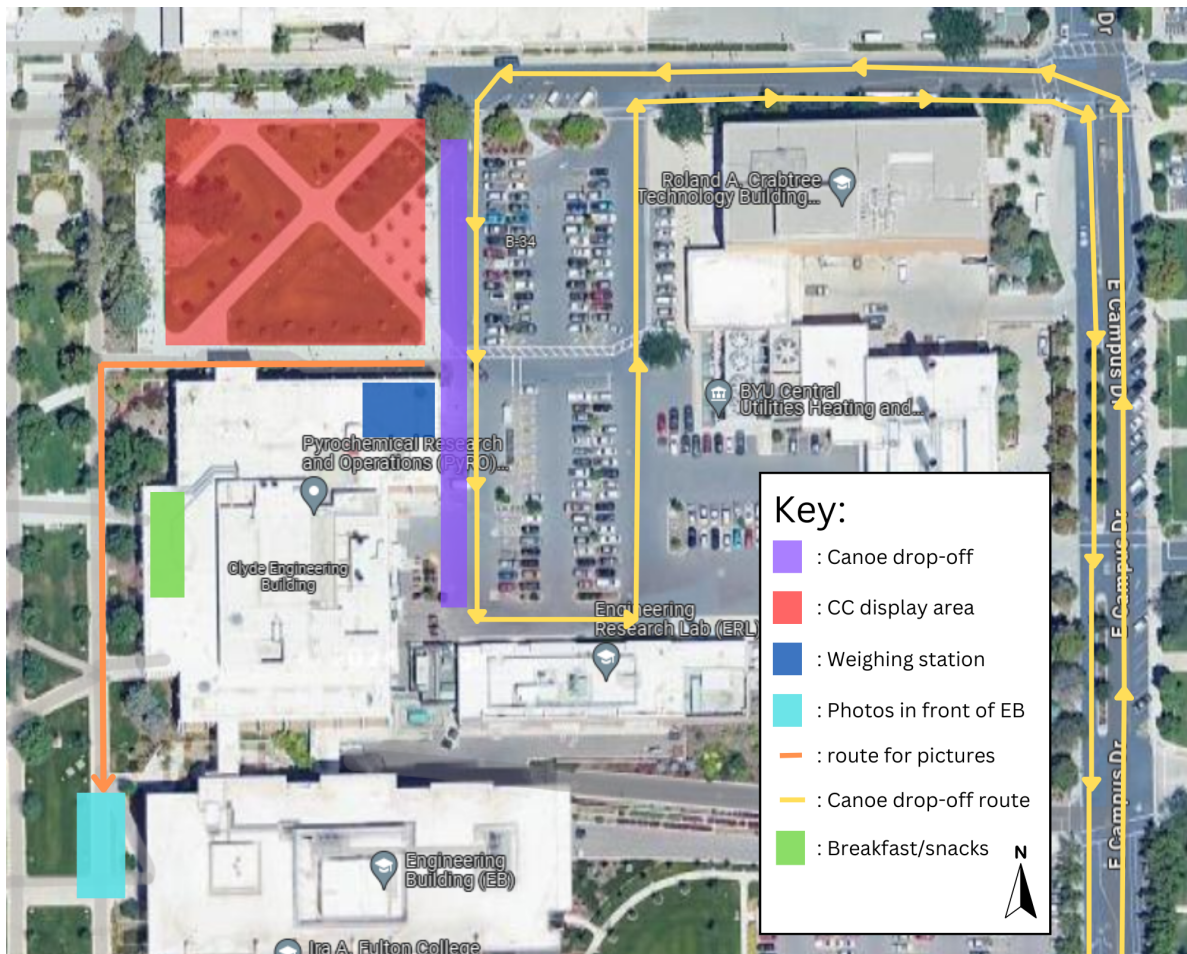


Figure 7: Trailer Parking Lot Entry/ Check-in

Weighing and Measuring Concrete Canoes

Concrete Canoe weigh-in will start at 8:00 AM, with the exact schedule to be provided during the Concrete Canoe Wednesday night Captains' Meeting Wednesday night. Teams will first go to the Weighing Station (see Figure 7), where our lab technicians will assist teams with weighing and measuring their canoes. Teams are responsible for providing the power to place canoes onto the measurement device. Volunteers will direct each team when it is their time to go, but we ask that each team is prepared and actively aware of the time they are assigned to weigh their canoe to help the event flow. Teams are requested not to form a line until all trucks have been unloaded around 8:15 AM.

After the canoe weight and length have been recorded, teams will take their canoes to the front of the EB for a team photo. After the team photo, teams will take their canoes back to the display area to their designated area to finish their display setup. Display judging will begin at 12:30 PM following the 12:00 PM Captains' Meeting. Teams that are judged early on are asked to keep displays up until 3:30, so other teams and the public have time to see the displays. Displays and other team materials should stay within their designated 12'x25' area. Canoe trailers should be parked in unassigned areas.

Concrete Canoe AV Check

Concrete Canoe Teams will see a setup similar to what will be present during presentations. During their time slot, Concrete Canoe Teams will have a chance to familiarize themselves with the technical connections and test-run their presentations to ensure everything works as intended. A sign-up sheet will be provided on the [Discord](#) Server for AV check.

Sustainable Solutions Check-In/Welcome Desk

Check-in for Sustainable Solution Competitors will be held from 8:00 AM to 3:00 PM in the Atrium of the Engineering Building. The Atrium is most easily accessible through the West side/Main entrance. At check-in, participants will receive a name tag, brochure, swag bag and instructions on where to set up displays once waivers have been confirmed. Teams are encouraged to bring their poster to check-in, as the display hall will be open at 8:00 AM. Teams may come anytime during this window; however, teams are encouraged to come earlier and not at the last minute.

The Check-in desk will also double as a Welcome Desk for teams to come with questions or assistance.

Don't forget about the [Waiver](#)!

Sustainable Solutions Poster Display

The display hall will be open for Display set-up starting at 8:00 AM. Each team can set up right after they check-in, on their designated space on boards with provided pins. Volunteers will be available to help competitors in the EB Event Space and to provide alternative display options if necessary. Teams will not need to provide their own easels.

Team Pictures will begin at 3:00 PM at each team's poster. Due to the number of teams competing, we ask all teams to be ready at 3:00 PM. The poster displays will begin at 4:00 PM, and teams should stay with their posters to discuss their project with other attendees during the session. Fan Favorite Voting will take place during this time as well. The poster session will conclude at 5:30 PM, and teams will be asked to take down their posters. Remaining posters will be collected and distributed at the Sustainable Solutions Saturday Morning Captains' meeting.

Surveying Presentations

Survey teams will present at the Weidman Center in the Engineering Building (EB 250). Each team will have an allotted time to present and should arrive 15 minutes early. A sitting area will be provided for teams to gather and check in. It is important to note that presentations will be closed to the public and other teams. The only people allowed to be present during the presentation will be the team presenting and the team's family or guests, but only if they are not supporting or a part of other teams. A clicker/laser pointer will be provided.

Please ensure your team has submitted their presentation before the event at this [link](#) by 12:00 PM, June 17th.

Surveying Equipment Practice

Between 9:00 AM and 3:00 PM, teams will have the opportunity in the Kimball Quad to practice and become familiar with the provided surveying equipment. There will be a station where teams can check out and use the equipment with the assistance of ASCE Surveying Judges.

Each team has been assigned a time-slot for equipment training with the sponsors and rules committee members. This training is not optional and teams won't want to skip this opportunity. The schedule will be included in the Event Packet collected at Check-In and will be discussed at the Wednesday night Surveying Captains Meeting.

Surveying Team Photos

Surveying Team pictures will be held on the front steps of the Engineering building between 1:30 and 2:30 PM (see Figure 7). There will be no “official” schedule for these pictures, and we ask that teams arrive earlier instead of later to get their team picture taken.

Teams who are scheduled for equipment practice from 2:00 PM to 3:30 PM should arrive by 1:30 PM and will be granted a first spot to get their team photo in order to make their 2:00 PM equipment practice time slot.

Surveying Topo Map Display

BYU volunteers will begin setting up plan sheets around 3:00 PM, and display will officially begin at 4:00 PM. At 5:30 PM, official displays will conclude, and Teams will be asked to collect their plan sheets. Teams are asked to stay near their topo maps for the duration of the official display time. Remaining plan sheets will be collected and distributed at the Surveying Saturday Morning Captains’ meeting.

Meet the Sponsors

The Meet the Sponsors event is an excellent opportunity for participants to meet the people who helped make this event possible. As a perk, there will be an opportunity to win fun prizes! During lunch, in the Wilkinson Student Center (WILK) Garden Court (middle of the main floor), our Sponsors will have booths and tables set up for competitors to learn more and to have lunch together. Each Sponsor will have raffle tickets they will hand out as participants talk to them. Raffle prizes will be given at the Welcome Ceremony and activities that evening.

A resume database entry link will also be provided on the [Discord](#) server before this event. Sponsors will have access to this database, and is an excellent opportunity for competitors to share their resumes with prospective employers.

Welcome Address

The Welcome Address will be held in the WILK Garden Court at 6:00 PM. We invite all participants to attend this event to hear from ASCE and BYU Ira A. Fulton College of Engineering VIPs, and to celebrate with other competitors. We have worked with the schedule to ensure all participants can attend, and if the Concrete Canoe display pick-up happens promptly. We encourage teams to wear team polos, university swag or other clothes to show off school spirit at the Welcome Address!

Following the remarks, all registered participants are invited to dinner in the Kimball Quad (see item 6 on Figure 1) before Thursday Evening Social Events begin. Volunteers will be present to help guide competitors to the Kimball Quad.

Friday, June 21st

Events will be held at Utah Lake State Park and BYU campus.

Canoe Unloading/Pick-Up & Truck/Trailer Parking

We ask that drivers follow the route indicated in Figure 8, including waiting in the holding area marked on the map (station 7). Volunteers will direct truck drivers when to approach the unloading station. Once canoes are unloaded or within 10 minutes of arrival (whichever happens first), trucks will be asked to depart to make space for the next team. The unloading schedule will be provided to teams at Wednesday night's Captains' meeting.

Concrete canoe teams will be responsible for arriving on the shuttle early enough to unload their canoe at their assigned time (see Table 1).

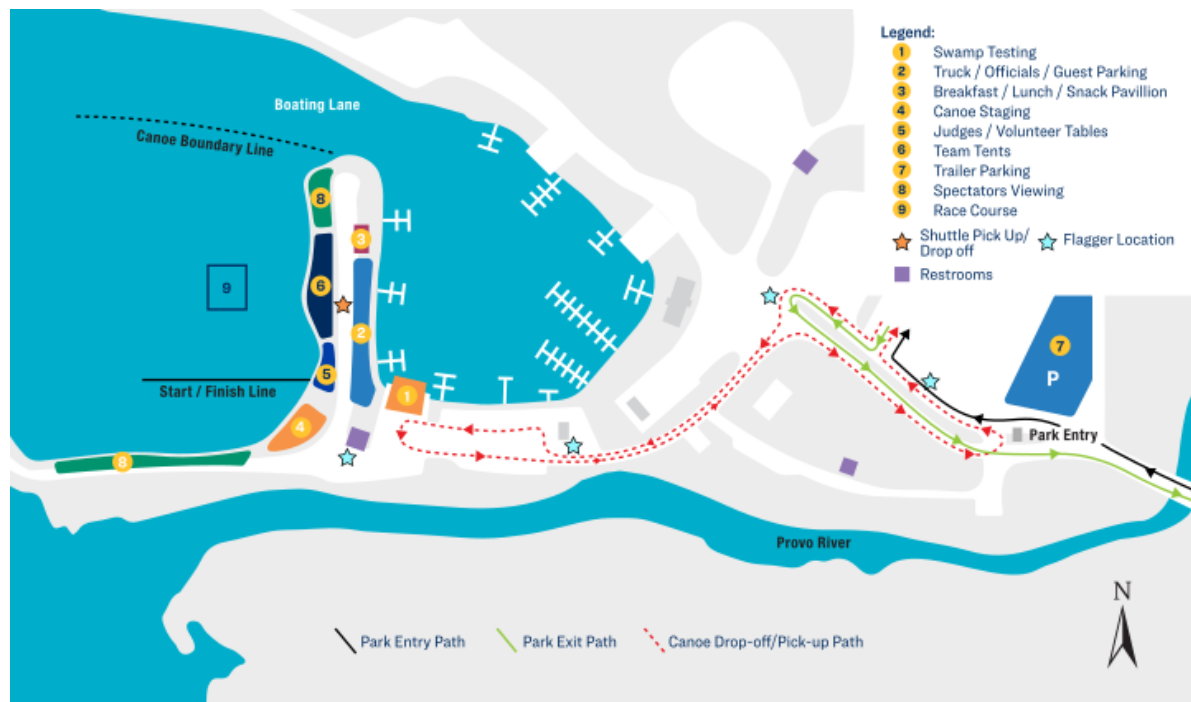


Figure 8: Race Day Layout and Travel Routes

After teams unload the canoes, drivers will be asked to follow the canoe Drop-off/pick-up path to station 7 to park their vehicle during the day. Don't forget to place your parking pass on the dashboard of your vehicle during the event and to enter the park. Trucks can park without trailers in station 2 to help move additional team supplies. Concrete Canoe Teams should set up tents in their assigned spots along the fence in station 6.

Canoe Pick-up will happen in reverse order from drop-off once all races are concluded.

Swamp Tests

Swamp Tests will be from 6:30 to 8:00 AM immediately after each team unloads their canoe. Each team will have an allotted time to pull their trailer up to station 1 (a concrete boat ramp), which can be seen in Figure 8, unload their canoe and perform the swamp test. Buckets and other supplies will be provided to swamp and drain the canoes. After the teams' successful Swamp Test, teams will bring their canoes to the staging area at station 4. Space will be given if teams need to add flotation to their canoes to pass the Swamp Test.

Food and Water Station

Food and water will be provided at station 3 (see Figure 8) during the event. Morning snacks will be offered to teams arriving at the lake, followed by an official breakfast at 8:00 AM. Surveying and Sustainable Solution competitors will be given first access as their events begin shortly after.

Breakfast will not be provided at the BYU Engineering Building. Participants should come early enough from the Hotel to State Park shuttle to get breakfast (anticipate a 15-minute drive). Please see Table 1 for the shuttle schedule.

Lunch will be provided at 12:00 PM for all registered attendees. Lunch will not be provided for non-registered team members or spectators. Additionally, dinner will not be provided on Friday evening for Championships Participants.

Following the conclusion of the Sustainable Solutions and Surveying events, participants will return to Utah Lake State Park. We recommend that all participants stay for the afternoon sprints. Station 8 will provide space for teams to set up tents and other supplies. Some natural shade will also be available along the south end of the jetty.

Surveying Showcase

Surveying Competition teams, please join us on campus on Friday, June 21st, for a demonstration of an unmanned aerial vehicle (UAV) field to finish the mapping process. The presentation will cover how to plan and collect UAV data, post-processing, and map deliverables for a topographic map. A live demonstration of UAVs will be included as part of the presentation.

Advanced topics of UAV and remote sensing applications in geomatics and land surveying will also be discussed.

Shuttles will leave Utah Lake State Park at 9:00 AM to take students to BYU's EB Event Center for the start of the showcase (approximately 9:20 AM). Shuttles will be provided to take students back to Utah Lake State Park at the end of the event (arrival time at lake approx. 11:45 AM).

Sustainable Solutions Field Trip

Sustainable Solutions Teams, please join us on Friday, June 21st, from 8:45 AM to 11:30 AM for a tour of the Provo River Delta Restoration Project, one of the largest and most complex ecological restoration projects being implemented in the Intermountain West. The focus of the project is to create new juvenile-rearing habitats for a fish called the June sucker, which was listed as endangered under the Endangered Species Act in 1986 and downlisted to threatened in 2021. Efforts like the delta are designed to allow for the natural recruitment of the fish.

We will look at both engineering and natural aspects of the project on this tour, such as approximately 200 acres of open water and channels that provide a wide variety of habitats for June sucker and other wildlife; the Provo River diversion; future location of the nature-based Provo Delta Gateway Park; and a small downstream dam.

Participants will be following the guide and walking on potentially uneven terrain or wet trails, so they should wear closed-toe shoes and dress comfortably. They are encouraged to bring bug spray, sunscreen, and their own water, as it is a marshy area and may be hot outside.

Meet at the shuttles (exact location TBD) in Utah Lake State Park by 8:45 AM Shuttle vans are provided for the tour. Participants should come early enough on the Hotel-to-State Park shuttle to get breakfast (anticipate a 15-minute drive).

Transportation Reminders

A shuttle will be provided for the entire day, with peak service in the morning and afternoon, to take participants between the Marriott Hotel and Utah Lake State Park (see Table 1). Participants choosing to drive their own vehicle to the State Park will be required to pay an entrance fee of \$20 per vehicle or \$5 per walk-in.

Concrete Canoe Races

ASCE will provide participants with a printed race schedule in the Event Packet received at Check-In. The exact timing and schedule of races will be at the discretion of ASCE officials. Teams are responsible for knowing the order of races and being responsive to calls from the Judges.

Following the captain's meeting, canoe racing will begin. Racing will start with slalom style and then sprint. Times for all races (except for sprint finals times) will be recorded on a whiteboard near the Judges/Volunteer Tables. After these races are complete, the petite and grand sprint finals will occur.

Please remember that all paddlers must wear a US Coast Guard-approved inherently buoyant (no inflatables) Type I, II, or III Personal Flotation Device (life jacket) while in a canoe during competition per ASCE regulations.

Although these events will be open to the public, we will not provide additional parking passes. Port-a-potties will be provided in addition to existing restroom facilities.

Due to space constraints, teams are asked to keep their canoes in station 4 and their team tents supplies in station 6. This will help keep things organized and efficient. Due to vegetation growth in the water in front of station 6, we ask teams not to stage the canoes in front of their team tents. Additionally, the space closest to the water in stations 6 and 8 should be kept clear of team tents and materials to allow for spectator and competitor access.

Don't forget about the [Waiver](#)!

Saturday, June 22nd

All events will be held at or near the BYU Conferences Center (see Figure 9). From 8:00 AM to 5:00 PM, field games and equipment will be available at the pavilion for teams to use in-between presentations and other obligations. Please return the materials when you're done with them so other people can use them.

Captains Meetings

Captains' meetings for all competitions will be held at various locations and times on Saturday morning. Team Captains will be allowed to eat breakfast during these meetings, but should plan enough time to get breakfast at the pavilion before meetings begin.

Concrete Canoe and Sustainable Solution Presentations

Although these will be held in different rooms and exact timings will differ per ASCE Competition rules, the format will be similar. Each team will have an allotted time to present and should arrive 15 minutes early. These presentations will be open to the public, and anyone is welcome to support each team present, but people will not be let in the room while a presentation is being given. A clicker/laser pointer and microphone will be provided.

All teams are required to submit their presentation at this [link](#) by 12:00 PM, June 17th.

Fan Favorite Voting for Sustainable Solution Posters will also happen in the hallways outside the presentations. Easels will be provided and teams will be responsible to bring their own posters. Display will start at 8:00 AM and end at 5:30 PM.

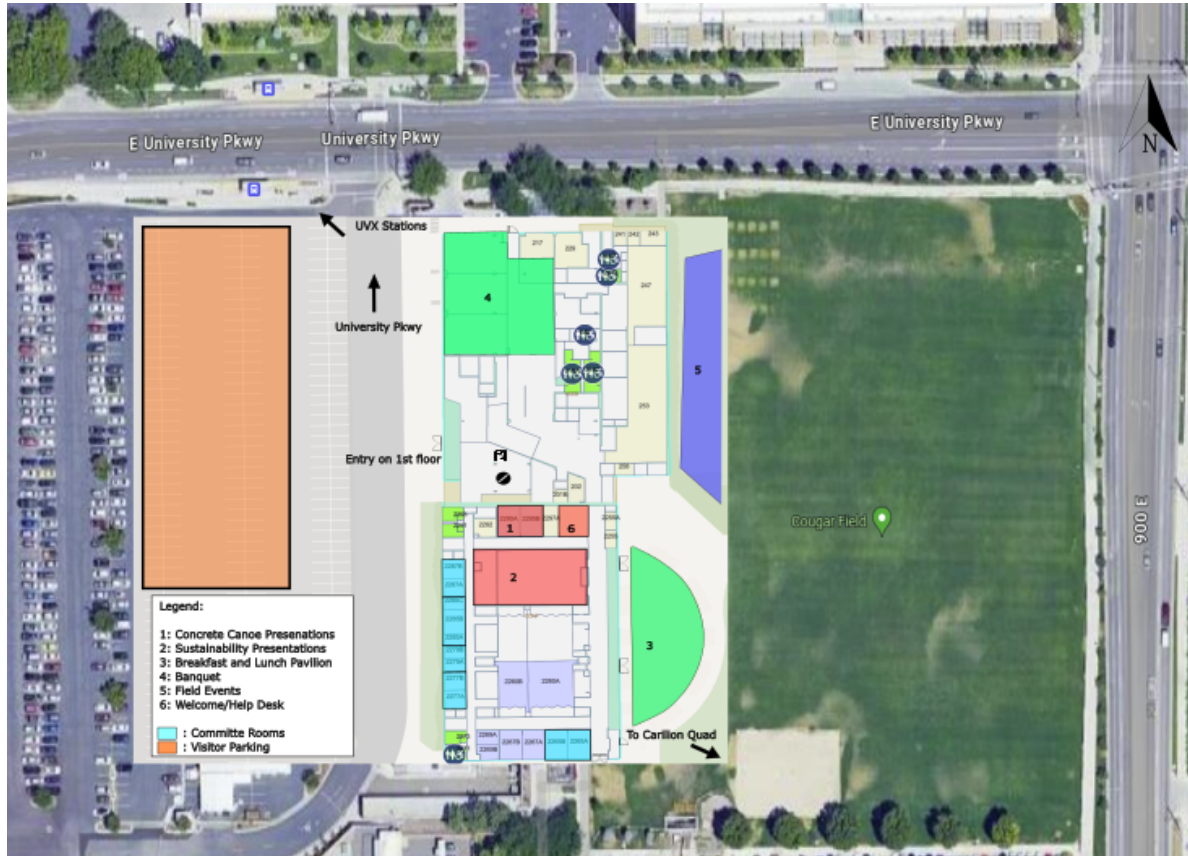


Figure 9: Conference Building Rooms

Lunch

Lunch will be provided buffet style in the outdoor pavilion attached to the Conference Building. Participants should plan accordingly to have time to eat around any assigned competition events. Judges and ASCE Officials will be given priority in the buffet line.

Surveying Field Tasks

This event will be on the Carillon Quad from 8:30 AM to 4:00 PM. There will be a pop-up tent where teams can gather and prepare equipment for the competition. Please remember that all team members must wear close-toed shoes and either a safety vest or high-visibility shirt (construction or high-visibility yellow, orange, pink, blue, red, or green) while completing the Field Tasks portion of the competition.

ASCE will provide the specific schedule for when each team will be competing in the event packet provided at Check-In. Any adjustments or questions will be clarified during the Surveying Team Captain's Meeting Saturday morning.

Lunch will not be provided at this location, but at the Conference Building (approx a 7-10 minute walk). Please plan accordingly to provide time to eat before or after your designated competition times.

Awards Banquet

The Awards Banquet will be held for all registered attendees at 7:30 PM. Formal attire is encouraged for the event, but not enforced. A shuttle from the Marriott Hotel to the Harman Building (Conference Center) will start at 6:00 PM (see Table 1). Please note that all participants will attend the banquet, and shuttles will fill up quickly. Please plan accordingly and leave a little earlier so you can arrive on time. Personal vehicle parking will also be available parking in the parking lots west of the Conference Center.

Seating will be "first come, first served" and at 7:20 PM, all "saved" seats will be released to those arriving. Competitors should not sit at tables reserved for VIP guests, ASCE Staff, judges, etc. and will be asked to move. We will have space for all registered attendees but due to the variety of team sizes, we can not guarantee that teams will be able to sit with each other. We will have almost 60 teams in attendance, so some flexibility will be necessary. Maybe you can sit next to some new friends!

Due to capacity constraints, non-registered team members/spectators will not be permitted to attend the Awards Banquet.

Following the Awards Banquet, a shuttle will be provided to bring participants back to the hotel. The last shuttle will leave at 10:30 PM. At the conclusion of the Awards Banquet, the Championships will be adjourned.

Don't forget about the [Waiver!](#)

Social Events

We are excited to host a variety activities for everyone to enjoy here at the Championships. To ensure we have the adequate staff and equipment for these events, please fill out the Mailer 2 Response [Survey](#), This will help us know how many people are interested in participating in each event. Please be aware that some events happen concurrently, so only one can be selected.

Social events will be open to all team members, including those not officially registered for the Championships.

Scavenger Hunt

During the week of the Championships, participants can engage in a photo scavenger hunt around the City of Provo and BYU Campus. This will provide opportunities to learn about the history of BYU campus and downtown Provo. The list will be provided at Check-In and can be completed anytime throughout the week. Reading Check: include the name “C0smo” in your mailer receipt survey response under “Additional Comments” for a chance to win your team a cool prize at the Welcome Address and Dinner.

As you find each location, take a photo with at least one group member and the building/place. Once completed, groups and/or individuals should come to the Welcome/Help Desk (see item 6 in Figure 9) any time before 5:00 PM on Saturday, June 22nd, to show their photos and claim their prizes (a really cool key chain mutli-tool!). We have enough prizes for everyone, so don't miss out!

Thursday Evening Events

Get ready to have some fun this evening, as so many activities will be provided on BYU campus!

- During and after dinner (only for registered attendees) in the Kimball quad, there will be a live DJ, spike ball, 9 square (in the air), cornhole and tug of war. As a part of a tug of war, we will hold team competitions. More information will be sent out on the [Discord](#) server the day of regarding the tug-of-war competition.
- Bowling at the WILK Bowling Alley (downstairs from the Garden Court). Wear your name tag to get unlimited bowling (depending on demand) and free shoe rentals!
- ASCE's Cities of the Future (voiced by John Krasinski) will be shown in the Garden Court at 8:00 PM. This event is exclusionary to all other events on Thursday night.

Sydne Jacques Women in Civil Engineering Lecture & Dinner

The BYU ASCE Student Chapter will host a lecture and dinner event on the BYU Campus on Friday night and has invited all participants of the ASCE Championships to attend. This will be a wonderful opportunity to hear from Sydne Jaques, a civil engineer specializing in engineering/construction soft skills, especially in women's empowerment.

Sydne will be giving a lecture at 7:00 PM in the Conference Center Pavilion, with her message specifically geared towards women in engineering. However, all are welcome to attend, and food will be provided afterward. For participants who choose to attend, we ask that you fill out this [survey](#) in addition to the Mailer 2 Response [Survey](#) indicating that you plan on attending.

Shuttles to the lecture for ASCE Championship participants will not be provided, and we recommend using the UVX shuttle or arranging for alternate transportation. Shuttles will be provided from the lecture to the Basketball Tournament and Y-Hike. No other shuttles will be provided after the lecture.

Friday Evening Events

Hopefully, the races won't wipe you out too much, because many evening events are planned! Please note that although these events aren't exclusionary from the Sydne Jacques Lecture, they are largely exclusionary from each other.

- Field Events: Most of the activities from the Thursday night, such as spike ball, volleyball, cornhole and 9-square, will be available again; however, they will be moved to Cougar Field. Starting at 8:00 PM.
- The Basketball Tourney Showdown: Games will be held on the main floor of the Richards Building (RB) from 8:00-10:00 PM (first shuttle leaving at 7:45 PM, see [Table 1](#)) and will conclude when the tournament ends. Each game will be 5 v. 5 teams, double elimination, 2 10-minute halves, 1 time out per game per team. The games will be self-officiated, with scorekeepers provided. The schedule and teams will be posted on Discord closer to the event. All participants who wish to participate must fill out this [form](#) and respond to the Mailer 2 Response [Survey](#). If you aren't playing, come cheer on your friends from the bleachers!
- Hike the Y Trail: Shuttles will run from the Marriott hotel to the Y trailhead starting at 7:45 PM (see [Table 1](#)) and will end once the group returns to the hotel. The 2.2-mile out and back hike typically takes an hour and a half to two hours to complete (gain of more than 1,000 feet elevation). At 9:00 PM, we will take a group photo with a drone at the top of the Y. We recommend that participants wear athletic clothes and hiking shoes and bring a water bottle, flashlight and bug spray.

Unofficial Social Events

Social events during the Championships don't have to be limited to what will be officially provided. There are many opportunities in [Provo](#) for informal gatherings, and we highly encourage this. Use the Discord server to organize events, just make sure they don't directly conflict with official Championships Events. Some ideas include:

- **Pool Time!** It just so happens that the hotel that the majority of participants are staying has a fairly sized indoor and outdoor pool. We won't be organizing anything official, but it could be a great place to gather and make friends! (Maybe on Wednesday night to hype everyone for the Championships?)
- **Visit with your neighbors!** Eat lunch or hangout with people in your state or [ASCE Region](#). If you don't know what ASCE Region you're in, check out this [map](#).
- **Dance the Night Away!** Provo is well known among students for it's active country swing dancing scene. Even if you've never danced before, or have two left feet, go check it out with some friends (just keep in mind your early mornings)! On Wednesday night head over to [Country Dance Provo](#) (\$8 entry, 8:30 PM to 12:30 AM), and on Thursday and Friday night go check out [Peak Nights](#) (\$7.50 entry, 9:00 PM to 1:00 AM). For team members not attending the Award Banquet, both venues will be open.
- **Bean Museum.** While you're waiting for you presentation (or if you get bored), go check out the [Bean Museum](#)! This is a free museum and has some pretty cool exhibits where you can learn about our evolving planet. Open from 9:00 AM to 5:00 PM Thursday and 10:00 AM to 5:00 PM on Saturday and only a 5 minute walk from the Conference Center!
- **Go see the ducks!** Need a chance to decompress? Do you like visiting small animals? Then the [BYU Botany Pond](#) might be the place for you! Feed the ducks, chill out in the shade or take the nature walk, the opportunities are endless! (If you do feed the ducks, please do a little [research](#) and pick food that is healthy for ducks and other wildlife. Contrary to public opinion, bread is actually dangerous for ducks!)
- **Visit the Farmers Market!** Every Saturday from 9:00 AM to 2:00 PM Provo is home to a large farmers market located at Pioneer Park just a [few blocks](#) from the Championships hotel. If you have time in the morning, go check it out! Vendors sell not only produce, but crafts, goods, and novelties.

Conclusion

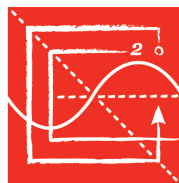
Wow, that's a long mailer. But hopefully, we answered most of your questions! Please fill out the Mailer 2 Response [Survey](#) and if you have any questions, please reach out at asce2024championship@byu.edu. And we reserve the right to tell you to look at the mailer again.

Big Thanks to Our Sponsors!

We are grateful to our Sponsors for their generous contributions to the ASCE Championships. Competitors will have the opportunity to network with many of these companies.



Horrocks.



NCEES

*advancing licensure for
engineers and surveyors*

NATIONAL EDUCATION SPONSOR



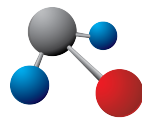
SIMPSON

Strong-Tie [®]

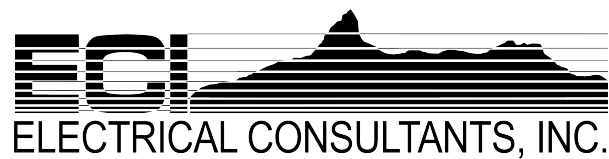
Silver Sponsors

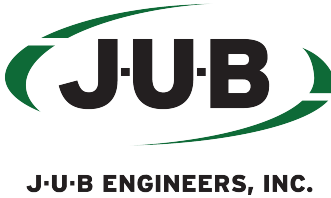
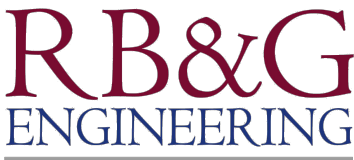


We listen. We solve.®



Ames Construction





Special Thanks

We are grateful to the following individuals for their generous contributions to the Championships and the BYU ASCE Student Chapter. These events would not be possible without their continued support of our students and programs.

Bob Winkel	Harold Thayn
Amy McCall	Troy Hunsaker
Jaide Bosen	Pedro Garcia
Dawn Byrson	Kristin Ulmer
Michael Stephenson	Christime Isom
Eve Christensen	Erlend Warnick
Brian A Matthews	Rob Johnson
Stan Johnson	Kent Stringham
Kensington Tayler	Walter Steimle
Johnny and Verlanne Johnson	Nathan Swain
Doug R. and Nancy Ferrell	Douglas J Sereno
Timothy Kovacs	Adam Homewood
Wendy Carr	Andrew Fugal
Tanner Dowell	Todd Christensen
Jennifer Neary	Jonathan Mervin
Brian Craven	Gary Marchant
Caleb Oaks	Austin Jasper
Alec Escamilla	

BYU